

# 8 SPECIAL PROJECTS

6-1

## SPECIAL PROJECTS

During the inventory, community mapping, the winnowing of opportunities and concerns, specific projects/issues emerge while in meetings or conversation with the community of Carondelet. These programmatic possibilities help create a design and planning framework for discussion. These lead to engagements and conversations with interested constituents. While keeping hard conclusions in abeyance, planning/design proposals evolve into richer formulations and test the promise of the many possible options/alternatives. This allows the participants to narrow the range of strong and feasible efforts within a variety of neighborhood needs, funds and settings.

The following are an incomplete sample of a variety site-specific possibilities in Carondelet; as these are realized new and timely opportunities will surface and attract responsive solutions.

## PLANNING / DESIGN OBJECTIVES

	FUNCTIONALITY	COST RESPONSIVE	APPROPRIATE DURABILITY	VIA BUE / ORIENTATION SAFETY	ENHANCEMENT
<b>SURFACE TREATMENT</b>					
• crosswalks / center lines	✓			✓	
• parking stalls bus zones / no parking	✓			✓	
• clarify / reorganize curbs cuts	✓		✓	✓	
• reorganize, re-strip surface lots	✓			✓	✓
• reseal parking lots / curbs edges		✓			✓
• power wash / sand blast surface walks		✓			✓
• infill / special paving wider sidewalks	✓		✓	✓	✓
<b>LIGHTING</b>					
• maintain street lighting	✓	✓	✓		
• owner sidewalk lighting	✓		✓	✓	✓
<b>SCREENING</b>					
• garden adjacent properties w/ walls, fencing, hedging etc.	✓			✓	✓
<b>BUILDING</b>					
• building facade repair, painting, sign age		✓			✓

## CARONDELET LAND USE STRATEGIES





- 1 Buildings to Sidewalk
- 2 Crosswalk / Intersection
- 3 Bus Stop / Shelter
- 4 Parking Lot / Screen Hedges
- 5 Screen Fences / 6' hi.
- 6 Adjacent Parking
- 7 Directional Signs
- 8 Storefront Lighting

HOLLY HILLS

MICHIGAN

MICHIGAN

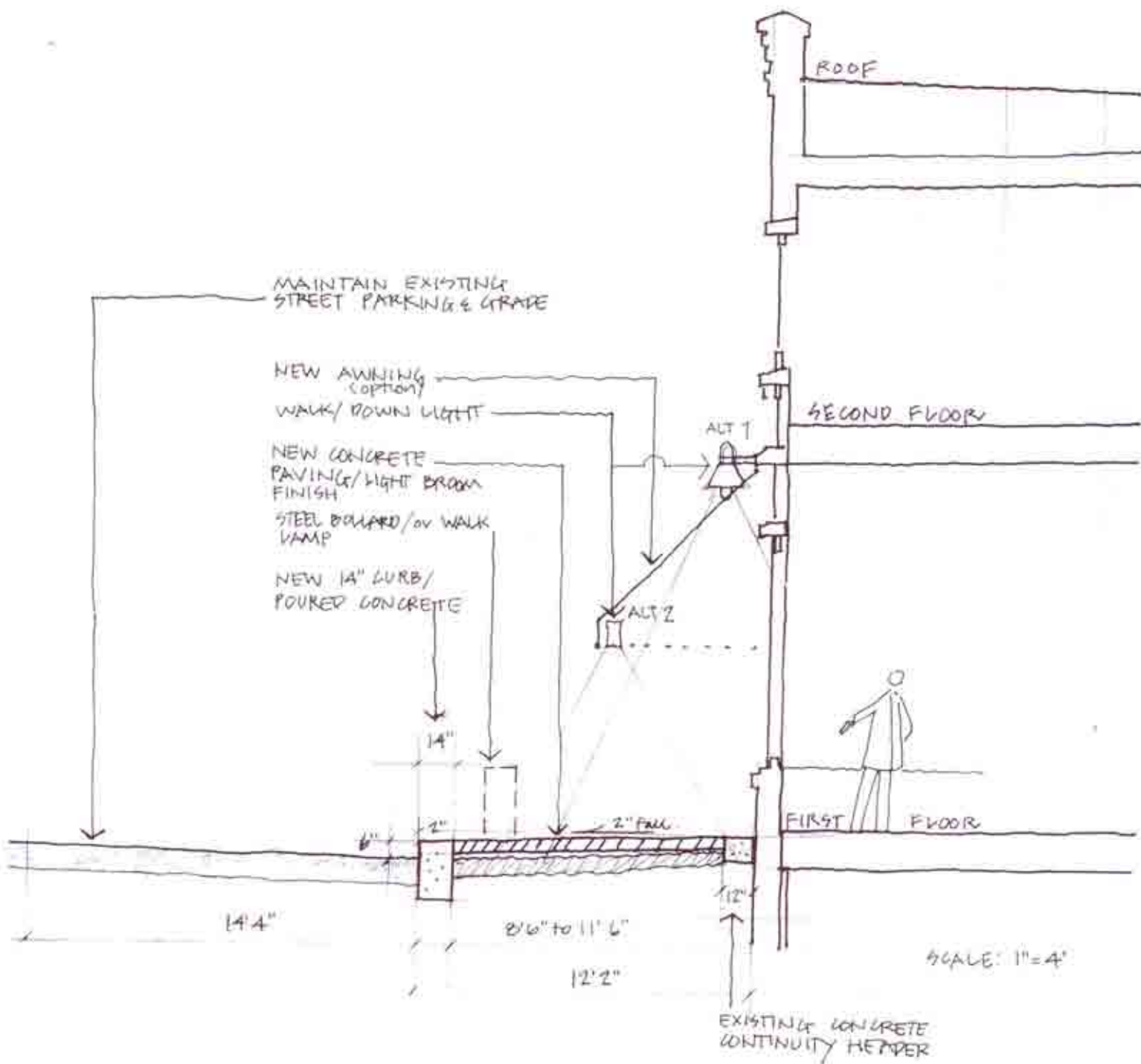
HOLLY HILLS

COMMUNITY INTERSECTION

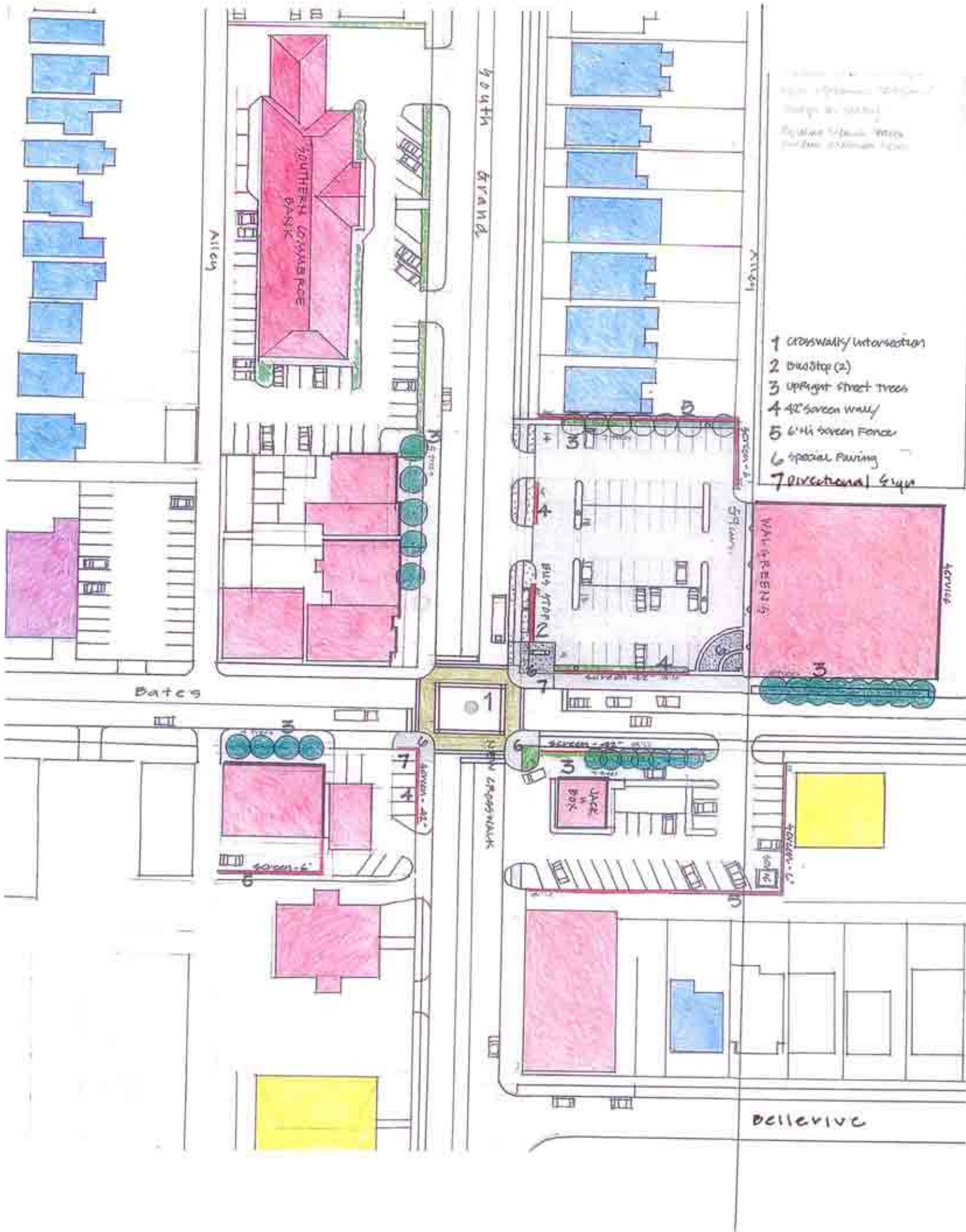
Scale: 1" = 20'







RETAIL STOREFRONT / SIDEWALK / LIGHTING



SOUTH GRAND & BATES INTERSECTION

CARONDELET LAND USE STRATEGIES



NORTH



Southside Community Center - Carondelet Park  
City of St. Louis - Department of Parks, Recreation and Forestry

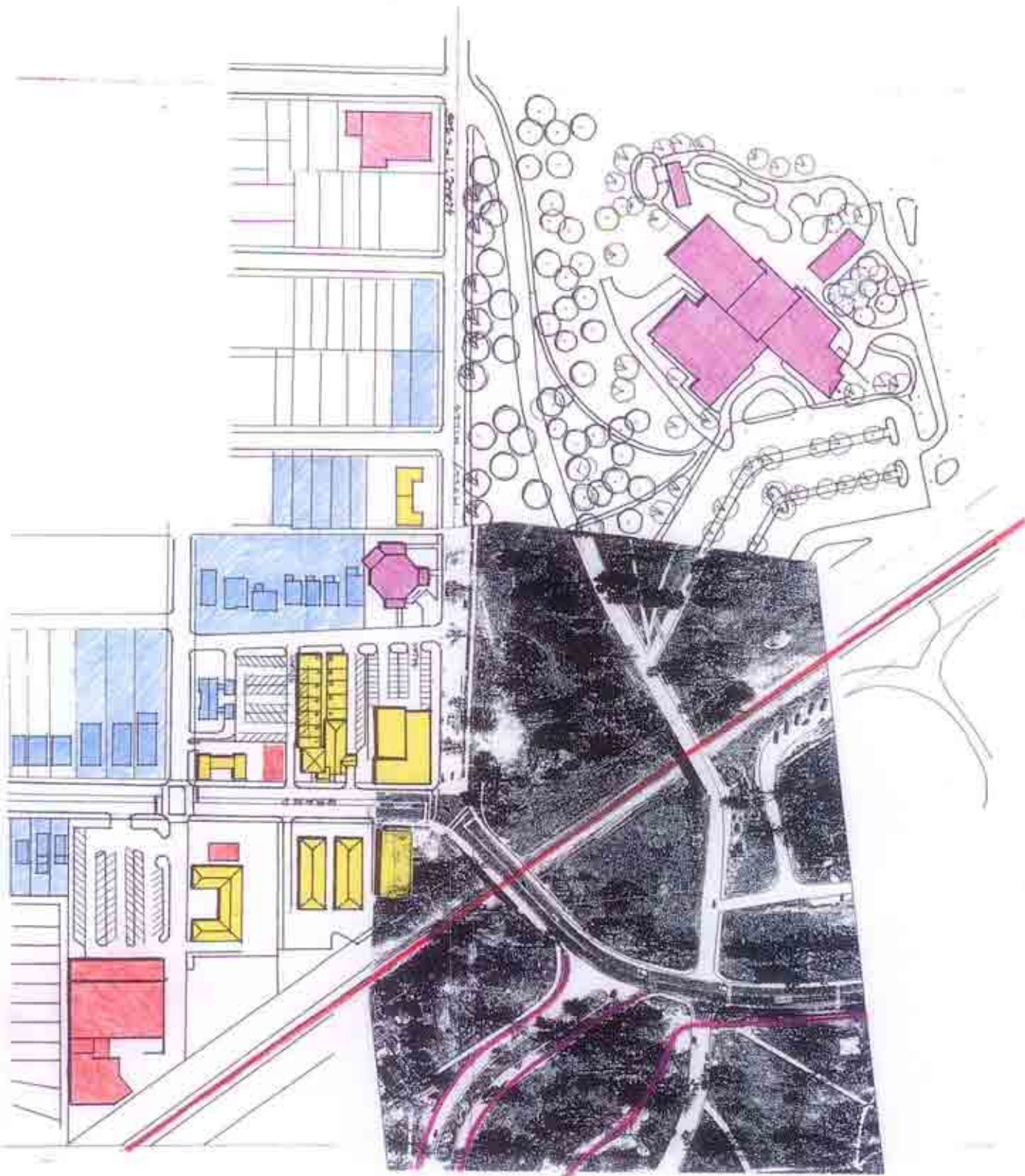
**KAI**  
Design & Build  
**JACOBS**  
*Image 0-f*

## CARONDELET LAND USE STRATEGIES

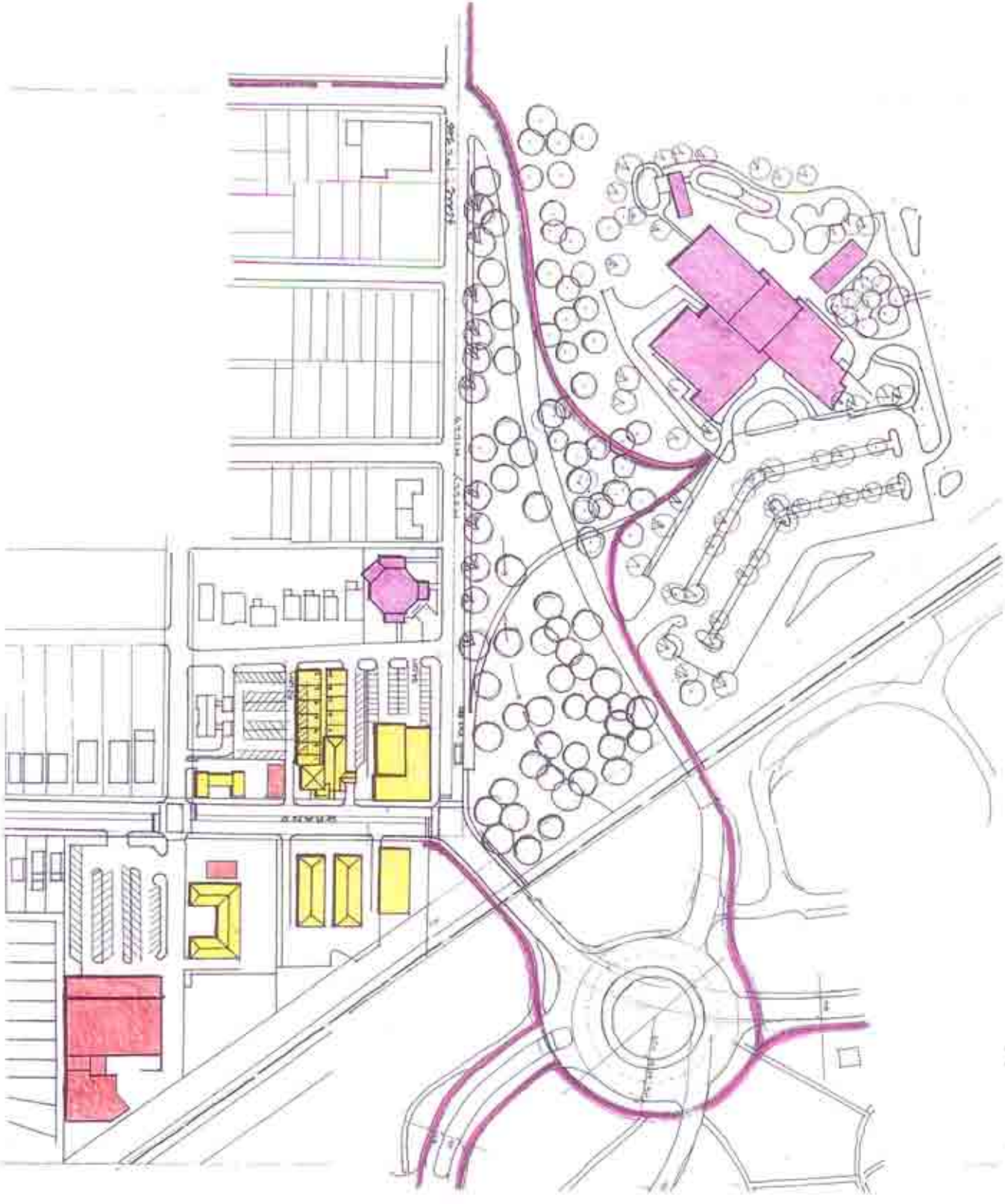


NORTH

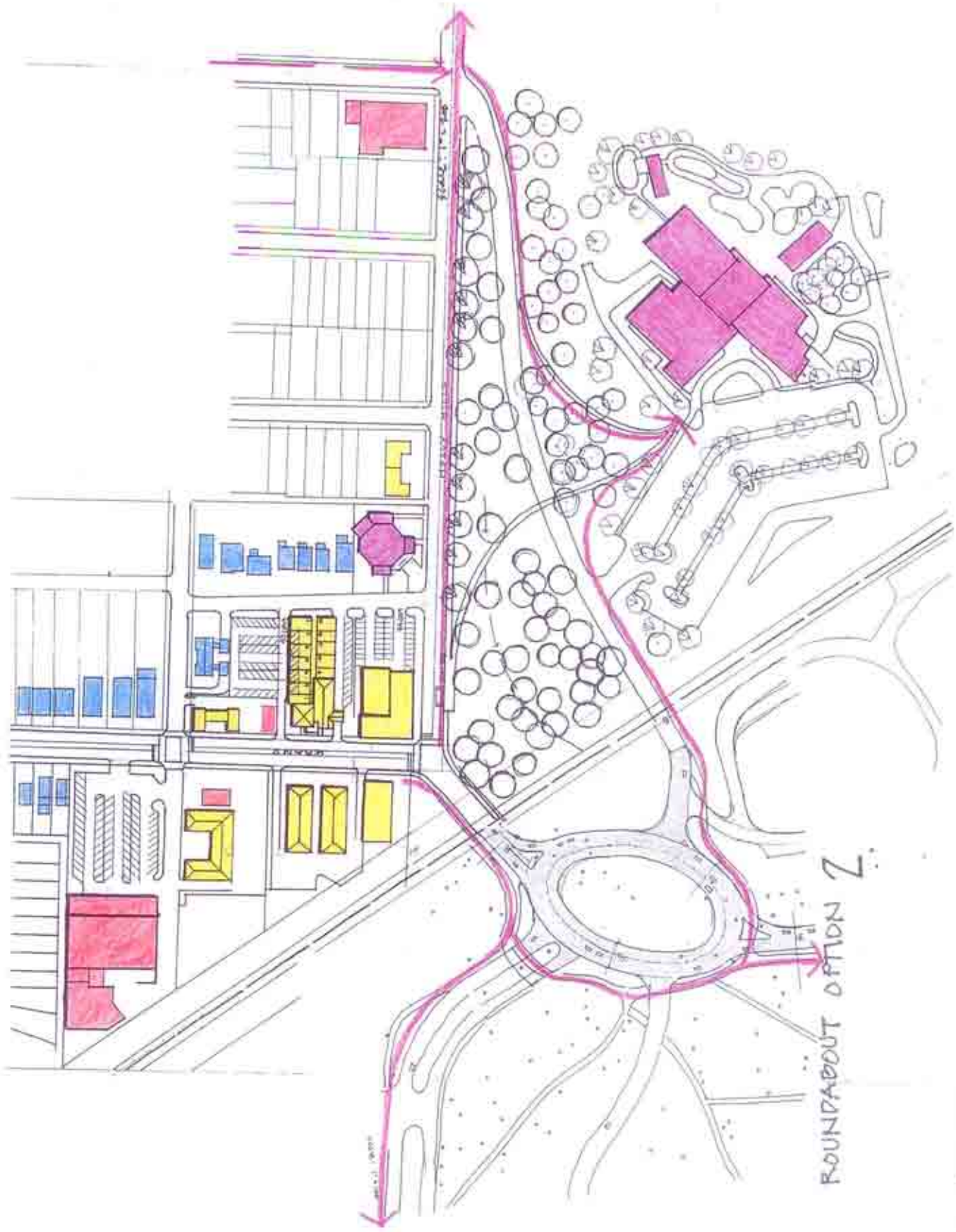
8.8



SOUTH GRAND / NORTH PARK ENTRY / COMMUNITY CENTER

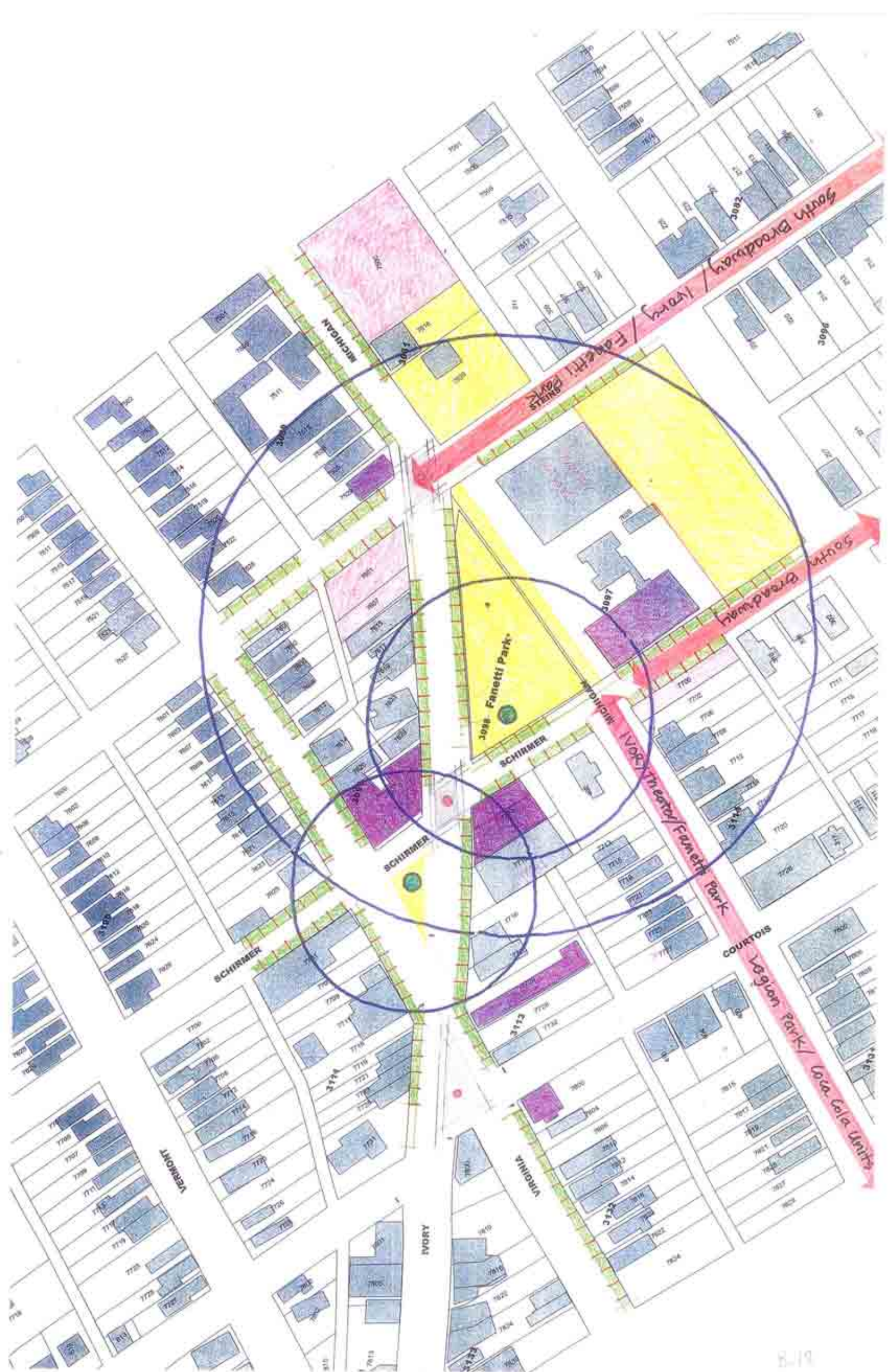


SOUTH GRAND / NORTH PARK ENTRY / COMMUNITY CENTER



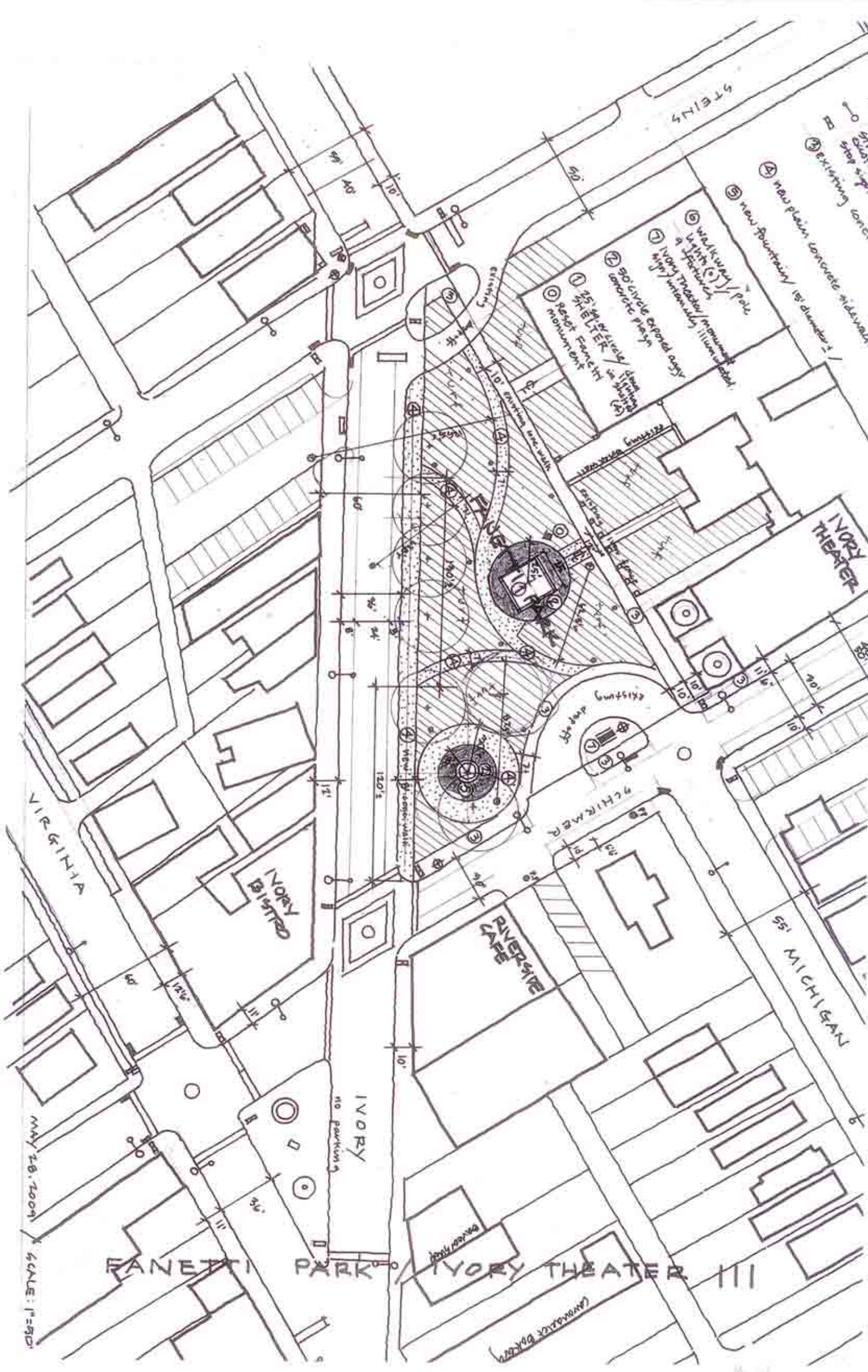
ROUNDABOUT OPTION 2

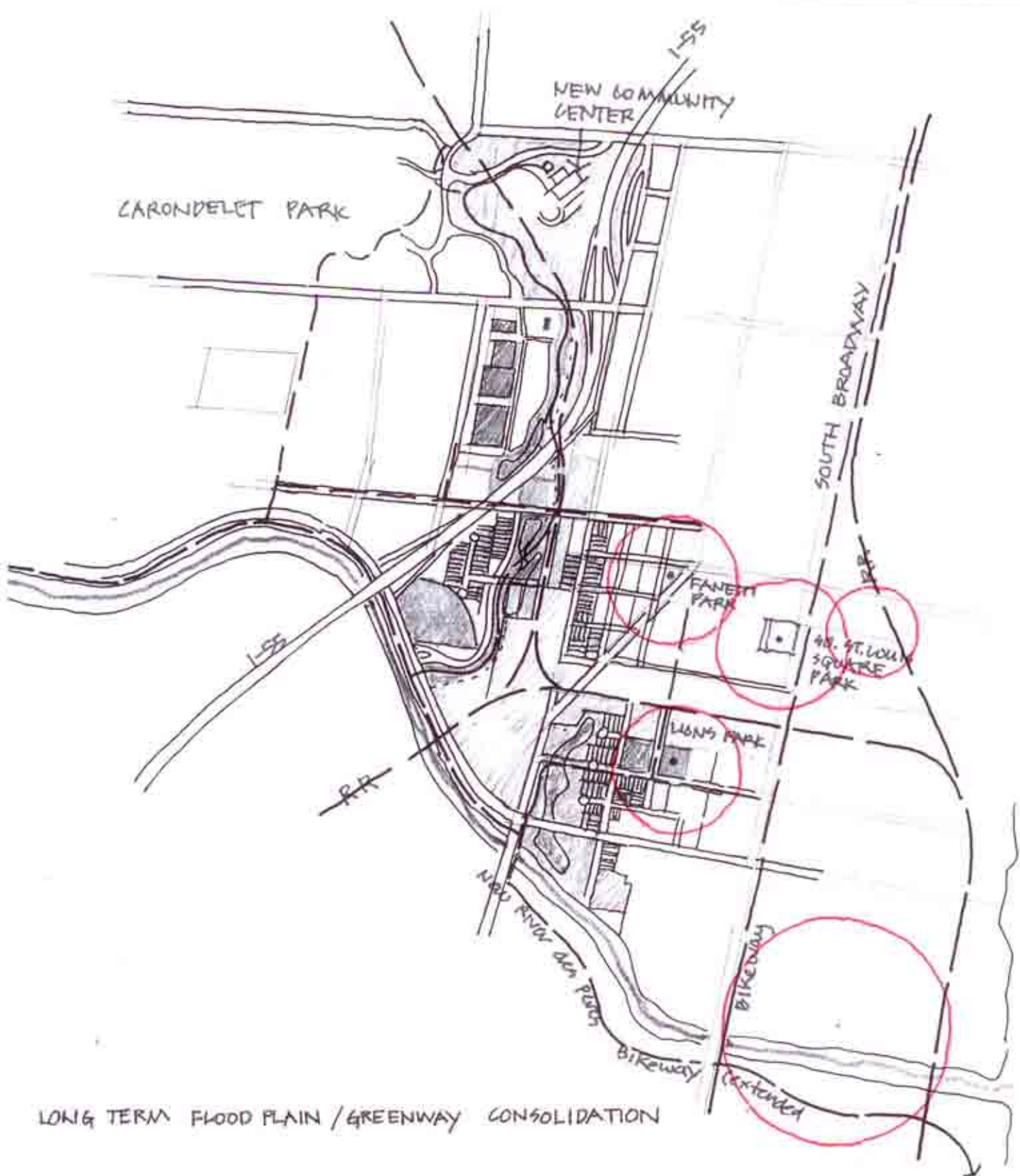
SOUTH GRAND / NORTH PARK ENTRY / COMMUNITY CENTER





FANETTI PARK / IVORY THEATER ||



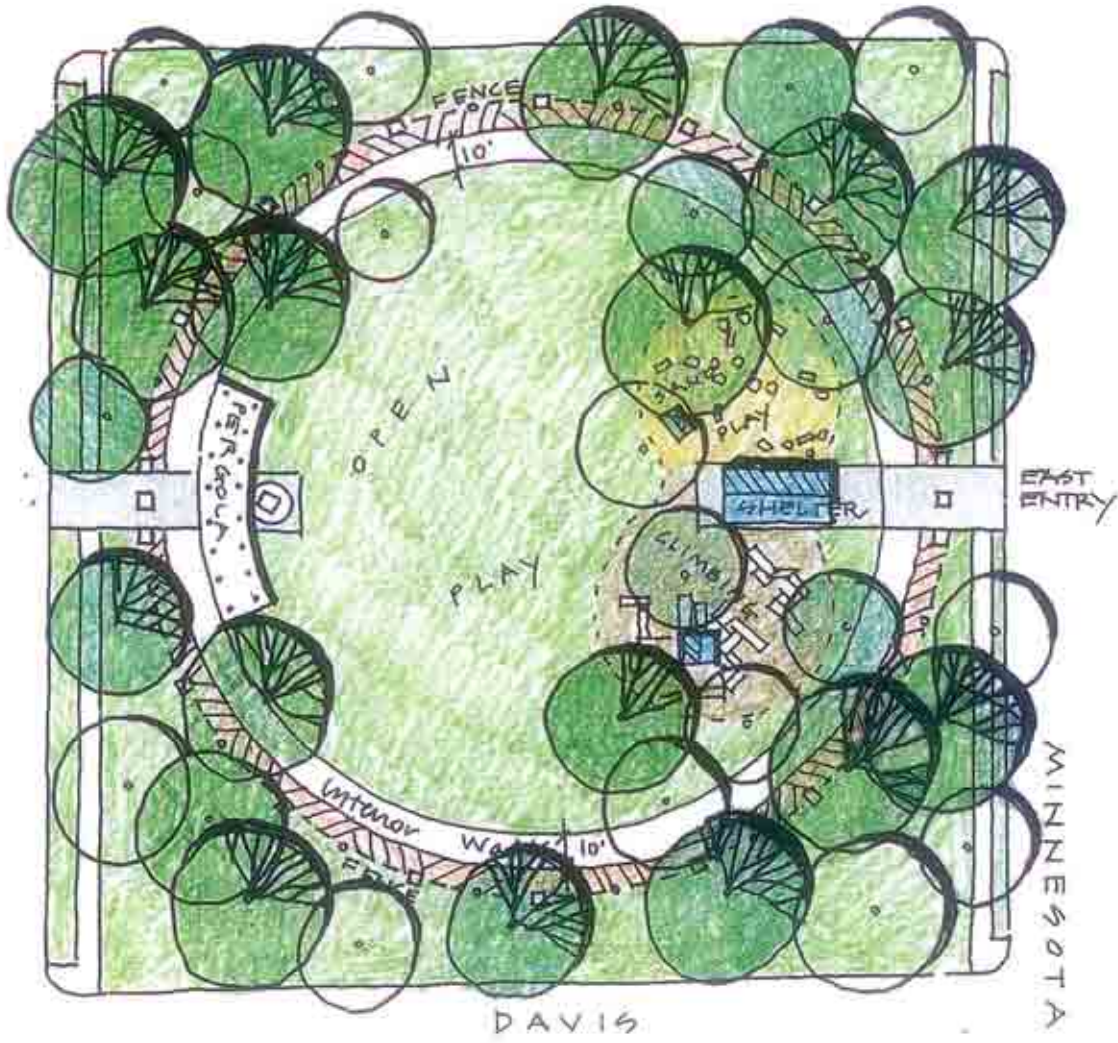


LONG TERM FLOOD PLAIN / GREENWAY CONSOLIDATION



TESSON/RAILROAD CORRIDOR: Improvements

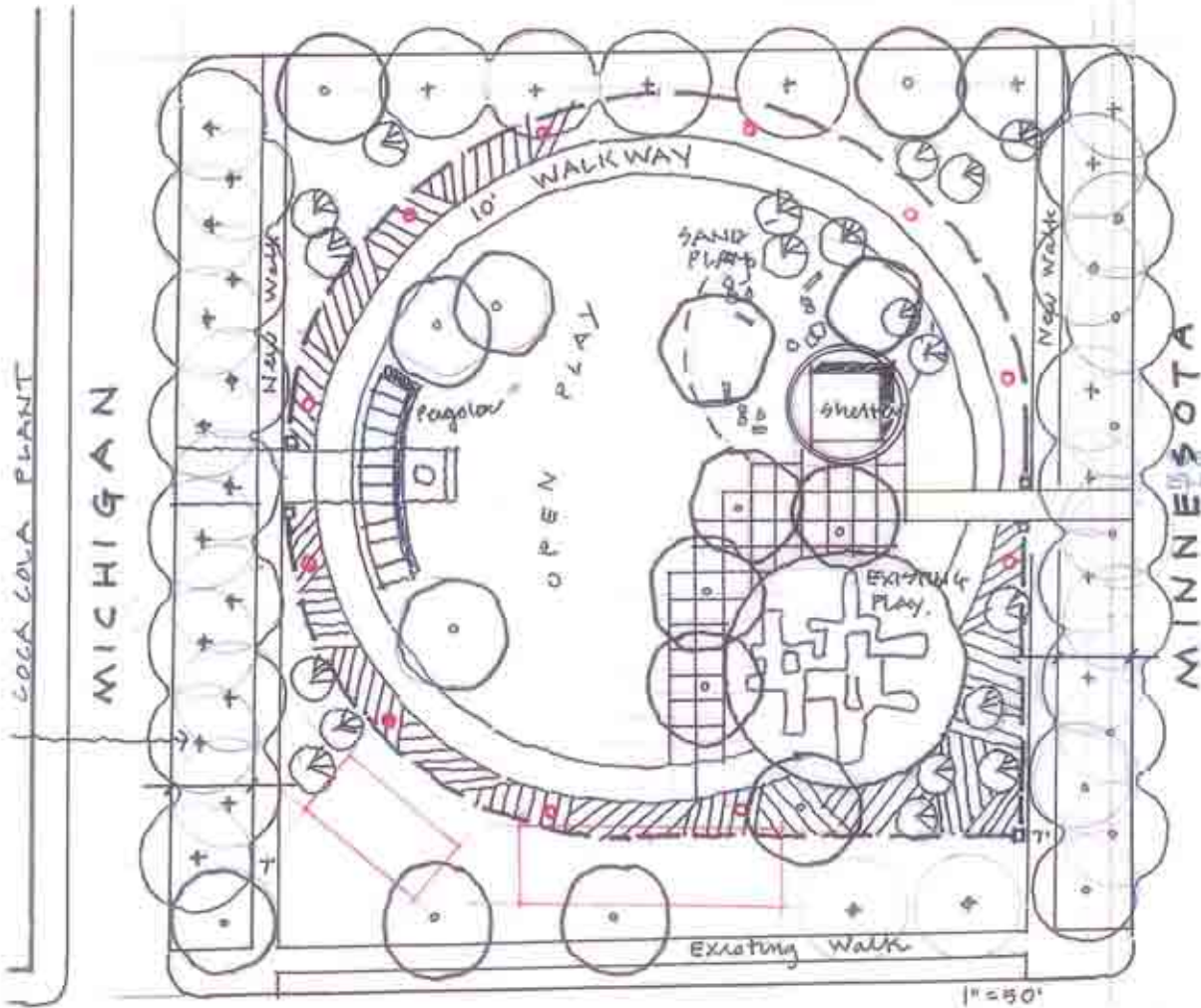
- 1 Shade Cloth screening attach to link fence/outside
- 2 Gravel Mulch cover / 1 1/2" to 3" compacted
- 3 Railroad crossing signal-Arm expanded sidewalk apron-link
- 4 Sidewalk widening / curb cut to Schurmer / N



DAVIS

EAST ENTRY

MINNESOTA

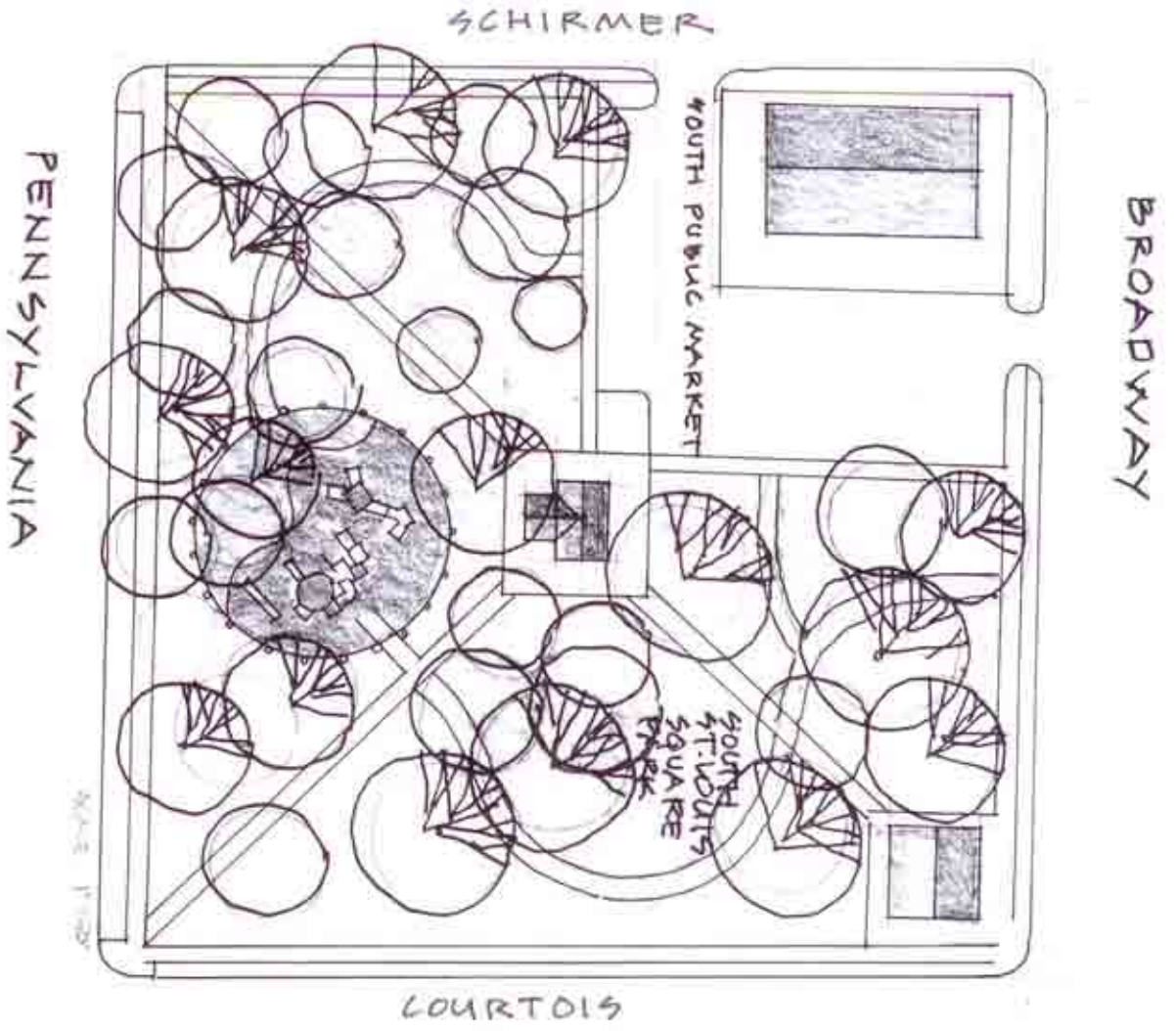


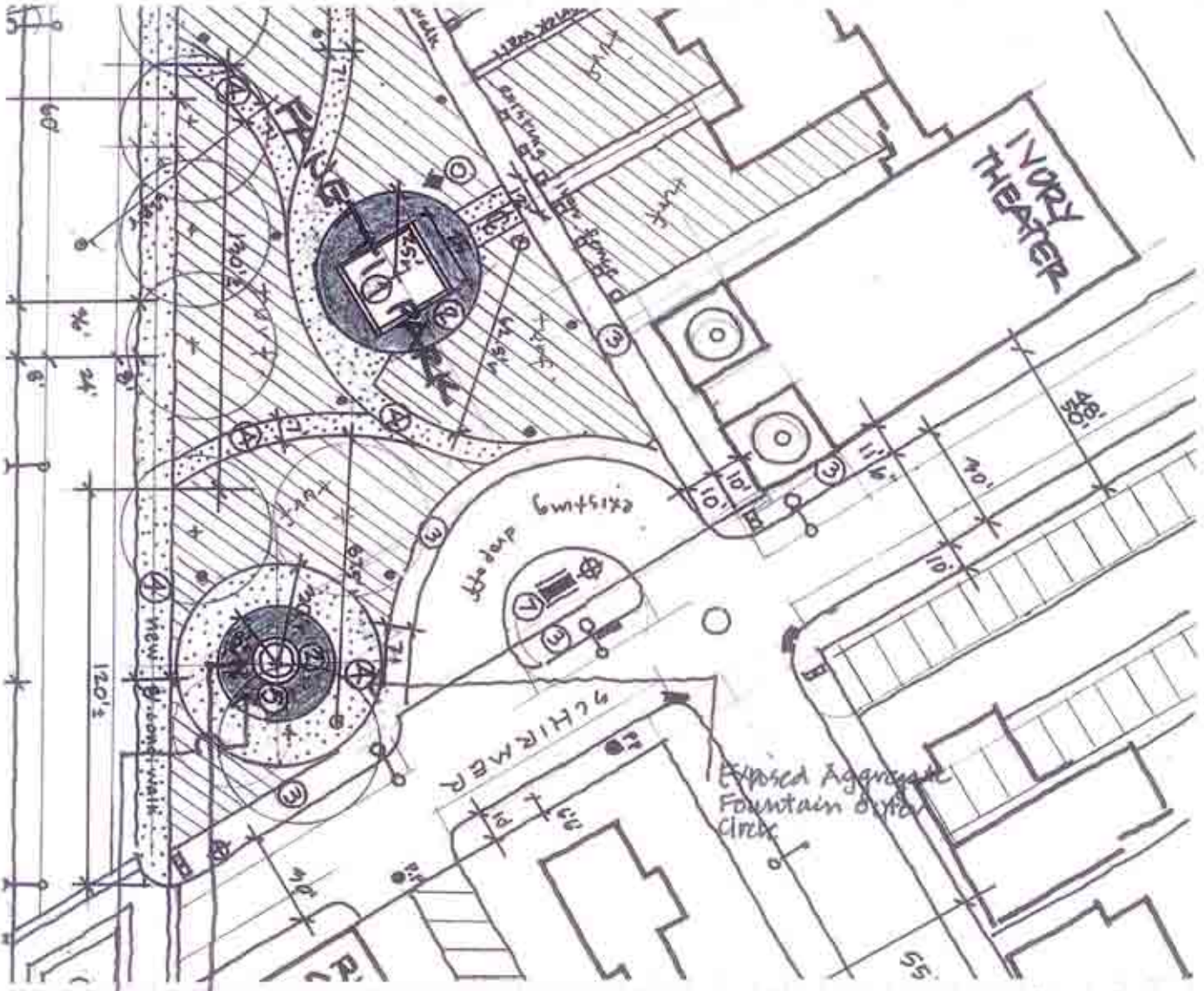
CARONDELET LIONS PARK

+ EXISTING TREES

o NEW TREES







Sept. 21, 2009

New Fountain / HydroDramatics / St. Louis  
 Colored Concrete Apron / 2' square trowelled/scoring grid  
 1st Choice: C-27 Westwood Brown  
 2nd Choice 1010 Brunstone

FANETTI FOUNTAIN Plaza

CARONDELET LAND USE STRATEGIES



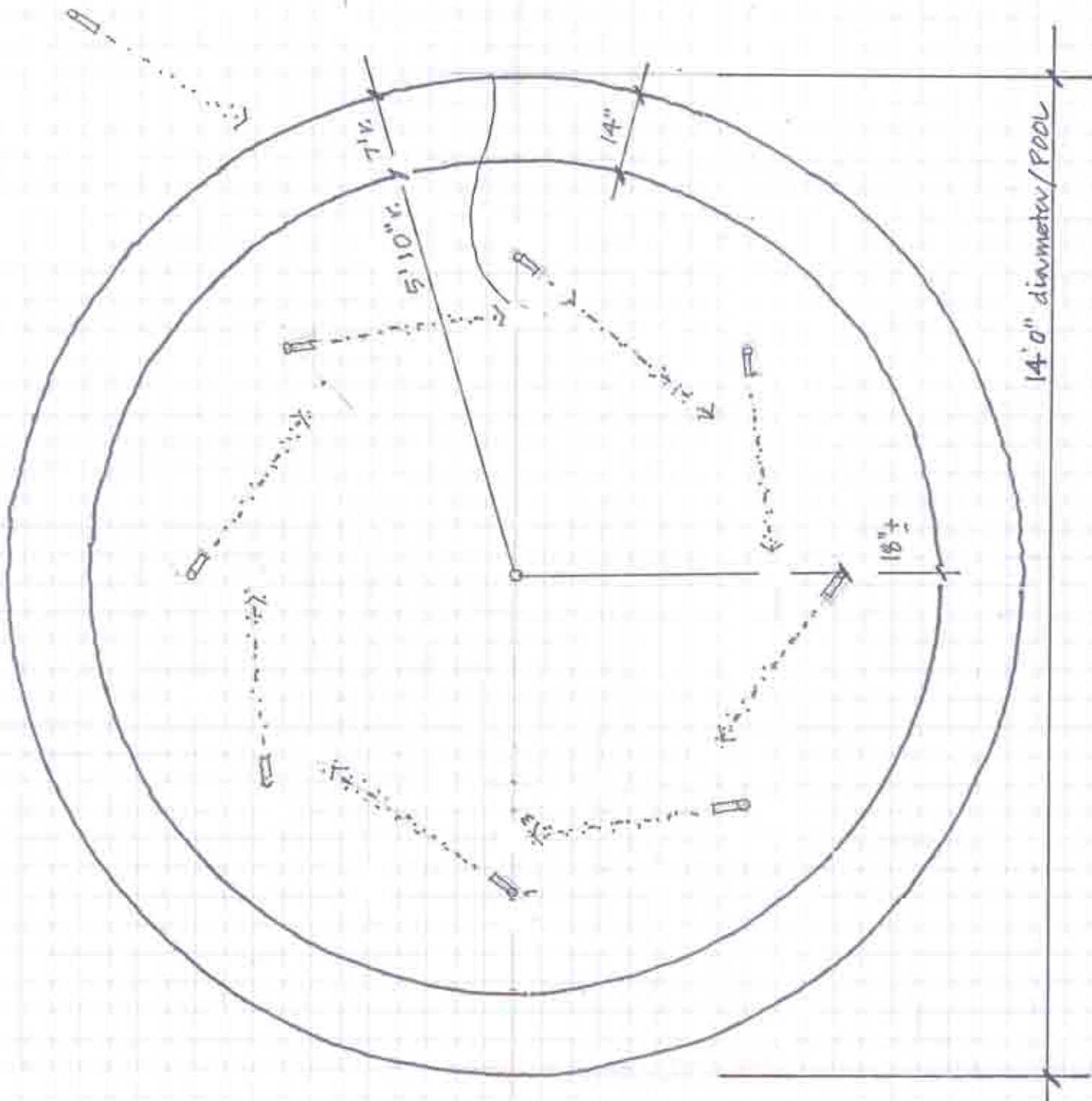
**FOUNTAIN  
PATTERN OPTIONS**

ONE: *Funwheel/  
Angled  
Eight Angle  
Fdnr/Jets*

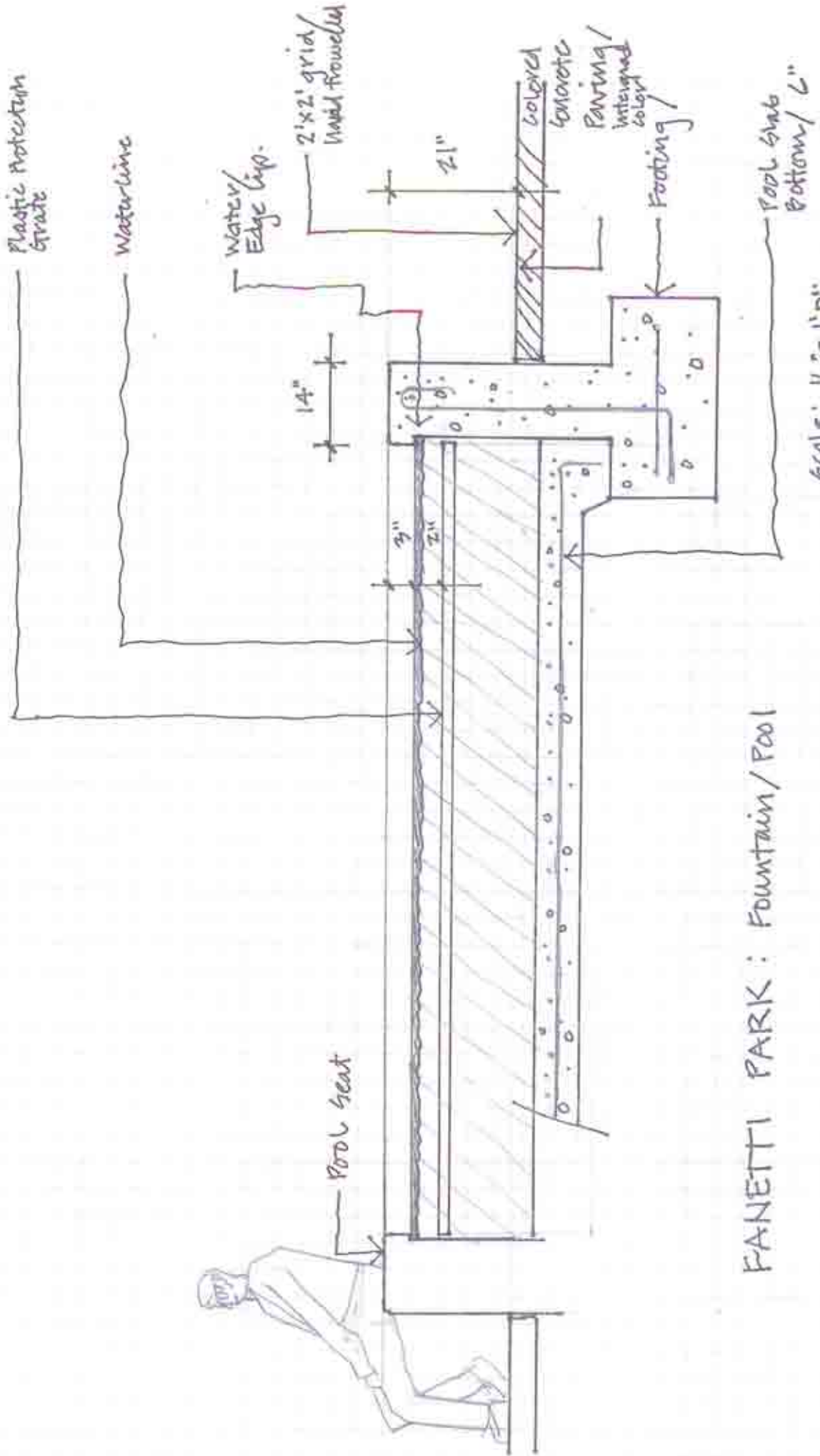
14" wide  
21" high  
poured concrete  
fountain wall /  
formed wall,  
smooth top,  
"eased" edges

PLAN:

Scale: 1/2" = 1'0"



CARONDELET LAND USE STRATEGIES



FANETTI PARK: Fountain/Pool

Scale: 1/2" = 1'0"  
SECTION:



FANETTI PARK  
Park Bench  
Landscape Forms  
Village Green Bench / Black  
70" length.



WestPort Bench Seating

www.sitescapesonline.com | info@sitescapesonline.com

phone 888.331.9464 | fax 402.421.9464

SOUTH BROADWAY STREETSCAPE  
City View Bench / Black  
backed & backless benches  
72" length



TRASH RECEPTACLE

DUMOR site Furnishings  
series 157 / steel / Black



**Materials**

Top Edge: 5/8"-diameter steel bar  
Vertical Straps: 1/4" x 1-1/2" steel bar  
Reveal Strip: 1/4" x 2" steel bar  
Cover: 12-gauge spun steel  
Internal Steel Shield: 18-gauge CR steel  
Liner: 22- or 32-gallon plastic  
Finish: See our [options page](#) for choice of polyester powder finish (shown in Black).

157-22-25BT 22 gallon All-Steel Receptacle, 229 lbs.  
157-32-25BT 32 gallon All-Steel Receptacle, 289 lbs.

**View Specifications**

[157-22-25BT](#), [157-32-25BT](#)

**Litter Receptacles**

**Ironsites® Series**

▶ view all featured products in series



S-42



S-535



S-424

The Ironsites® Series is a family of products that adds incomparable aesthetic appeal to public spaces. They are designed to fit beautifully into almost every landscape theme from the very simple to the highly ornate. This premier line of site furnishings includes litter receptacles, benches, ash urns, planters, and tree guards. Used together as a family, they carry out a beautiful theme of elegant lines that belies their great strength, functionality, and durability. The high quality and durability of our Ironsites® products ensures that the public areas they occupy will stay beautiful for years to come.

Victor Stanley / Ironsites Series  
S-424





LOT/  
PARKING LOT  
FENCING / SCREEN  
42" hi. / commercial -  
industrial grade  
black.  
rails / square posts.

## Bike Rack 83

Bike Racks



• EASILY ADAPTS TO ANY AREA

### Materials

Frame: 2-3/8" O.D. x 11-gauge wall galvanized steel tube  
Finish: See our [options page](#) for choice of polyester powder finish (shown in Bronze).

### 83-00G Galvanized Loop (30 lbs.)

- S-1 Embedment
- S-2 Surface Plate
- S-4 Sub-Floor

### 83-00 Powder-Coated Loop (30 lbs.)

- S-1 Embedment
- S-2 Surface Plate
- S-4 Sub-Floor

[View Specifications](#)  
[83 SERIES](#)

<<< Back to selection page

DUMOR site Furnishing  
Bicycle Rack  
Hoop/loop Black Steel/  
2 3/8" o.d. steel pipe/  
Embedded



## HARBORSIDE - CRS22

This large scale down light is shown here on a DA bracket finished in a special custom blue. The fixture scales 22-1/4" diameter x 18-3/4". The outside of the fixture is painted to match the bracket and pole while the inside is highly reflective white enamel. Stepped top fixture is used for smaller diameter arms.

### Specification Downloads

[CAD Drawing](#)

[CRS22 Spec Sheet](#)



STORE FRONT/  
WALK LIGHT

SIDE  
WALK Pole Light

American / embedded  
Lumec

