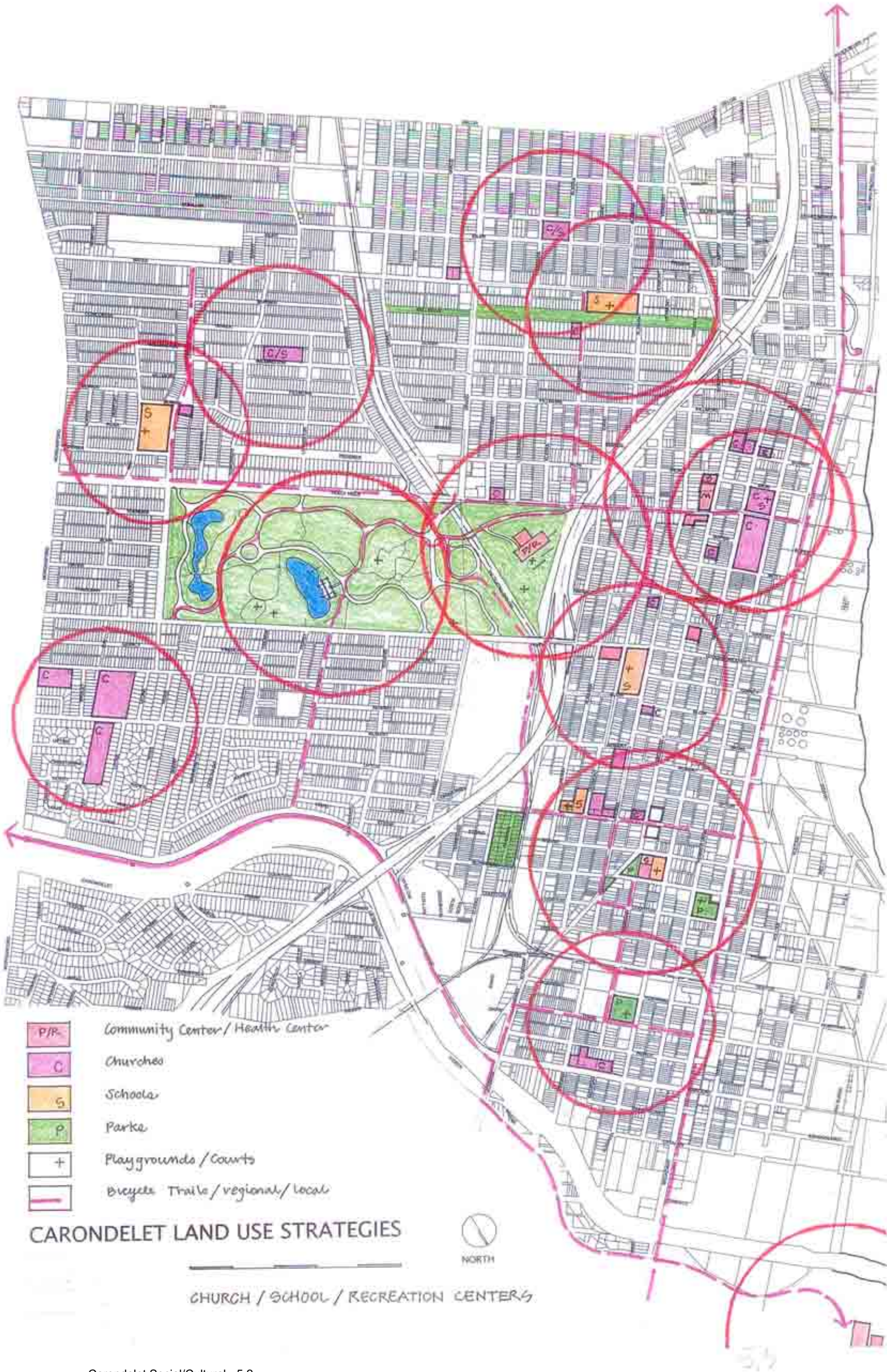


5 CULTURAL/SOCIAL

CULTURAL/SOCIAL/RECREATION

The cultural and social institutions of Carondelet have a long and effective history in the neighborhood. The Sisters of St. Joseph have been a community model for 160 years. Churches, schools, social organizations have established numerous settings and networks of neighborhood services and programs for the residents of the neighborhood, the YMCA, CCBF.... The various community organizations flyers, catalogues outline both the depth and reach of these efforts. Daily, weekly, monthly and annual events for the residents characterize the thoughtfulness and continuity these groups offer Carondelet, list them. These programs address resident's family life cycles; new parents, day care, pre-school, youth sports, couples, continuing education, elderly activities, etc.

There are several community planning models that are expressed historically and currently in the city that are useful reminders for neighborhood going forward.







Carondelet Area Churches and Schools
 From St. Louis City GIS Geodatabase

- Church
- Public High School
- Public Middle School
- Public Elementary School
- Closed Public School
- Catholic High School
- Catholic Elementary School



Sources: St. Louis City GIS Database, and St. Louis County GIS CD #1



CHURCH/COMMUNITY ORGANIZATIONS:

PROGRAM CHECKLIST

Church/Services-Programs

- Church/Mass
- Dinners/Potluck
- Visiting speaker/music
- Sunday School
- Weekly meetings/lunches
- Church trips
- Holiday programs

Senior Programs

- Hot lunch
- meals on wheels
- indoor rec. activities
- outdoor trips/ad.
- cultural programs/trips
- guest speakers
- movie programs
- visiting music prog.
- van transportation

Church/Community Outreach Programs

- Community business expo
- Van programs
- job counseling
- food pantry/
- USDA food diet
- Utility assistance
- repair/weatherization
- homebound visitation
- education/literacy prog.
- GED/english prog.
- remedial reading

Park/Recreation Activities

- league sports
- Group events/ prog.
- Concerts in Park
- Movie in Park
- Summer Youth Prog.
- on site
- off site
- Fitness/yoga etc
- Scouts Programs
- Bikeway Connection

Library Programs

- open hours
- reading program
- bookmobile
- elderly book lending
- music/arts program
- book sales
- meeting rooms
- historical society

POLICE/ PUBLIC SAFETY PROGRAMS

- Neighborhood Watch
- School Program
- safety
- drug
- other
- community events

FIRE PROTECTION/ SAFETY PROGRAM

- school visit.
- station visit.
- community events

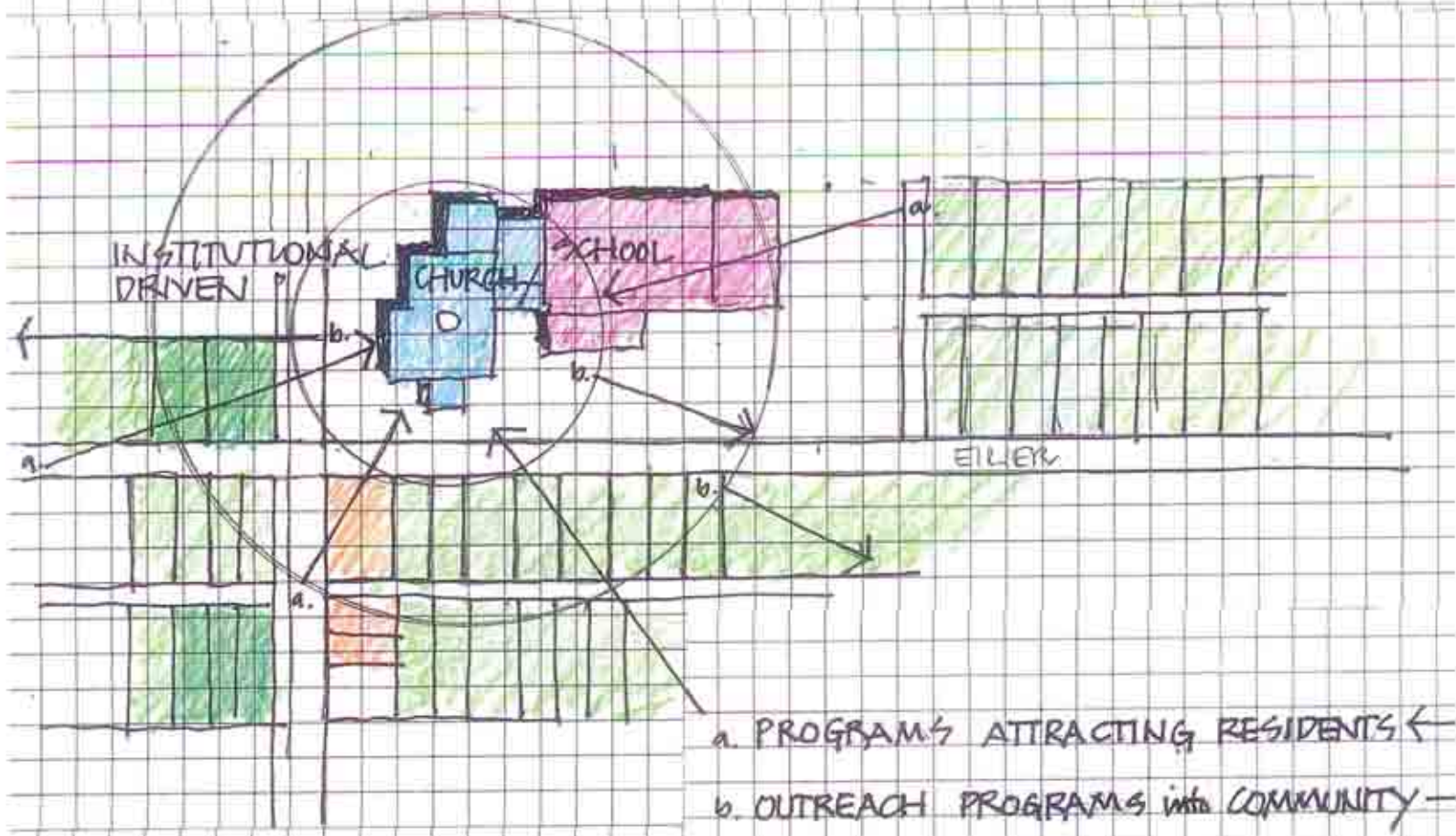
SOCIAL/CULTURAL SERVICES

CARONDELET LAND USE STRATEGIES



NORTH





SOCIAL INTERACTION TYPES

Church/School MODEL

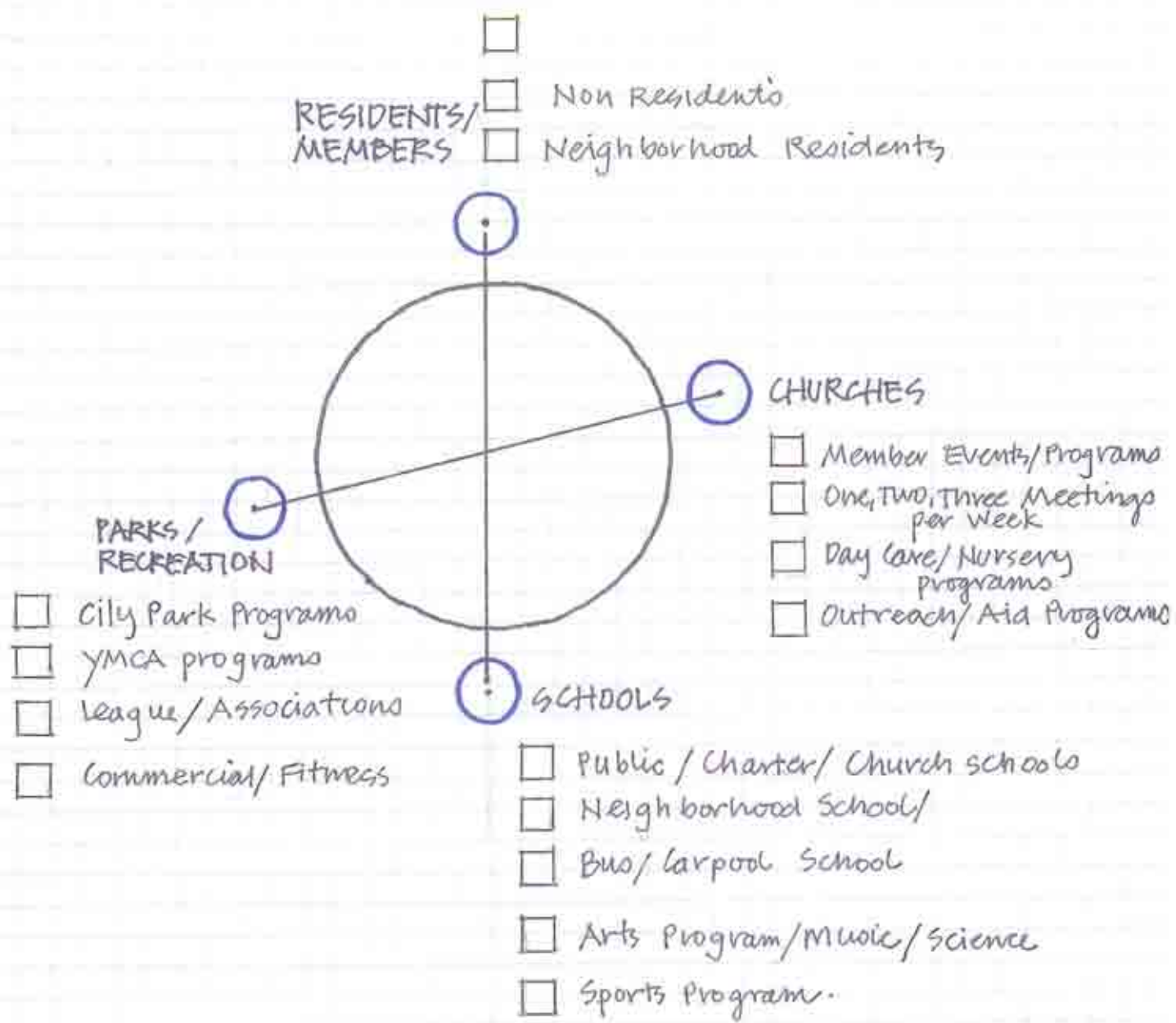
Public - Charter - Church.
 Day Care / Pre School / Elementary /
 High School

Community Center / Public Library / MODEL

YMCA / Church / MoBot - Art Mus. / Music.
 Recreation - School + Programs

Sports / Parks / League / SCHOOL PROGRAM MODEL

Hockey, Baseball, Basketball,
 Football.



SOCIAL / CULTURAL

Church / School / Recreation Interaction MODEL

CARONDELET LAND USE STRATEGIES



NORTH

◆ MEMBERSHIPS ◆

Several levels of membership are available:

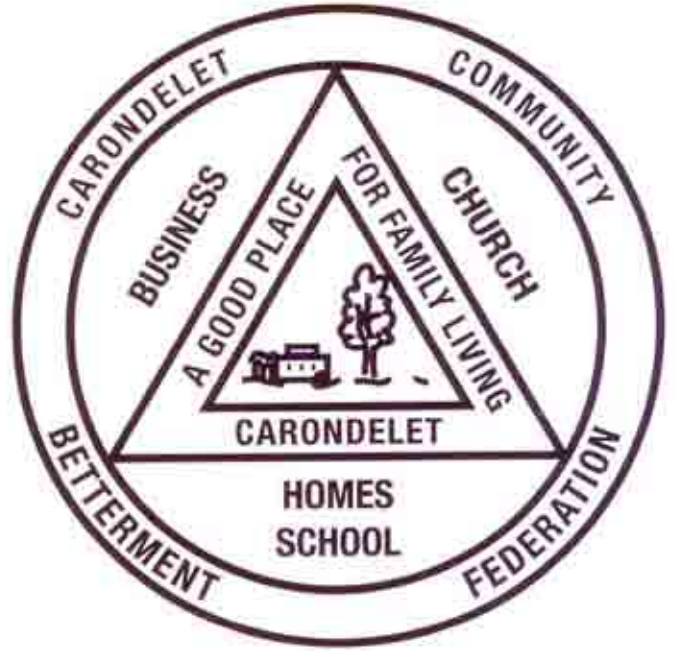
Adult Member - Anyone 18 years of age or older.

Business Member - Any business or organization that supports the purpose and objectives of CCBF may become a Business Member. The CCBF Business Group meets monthly for a luncheon from September through May. Guest speakers and information concerning the community are featured.

Life Member - Adults contributing \$100 or more.

All members receive *the CARONDELETT*, the community newsletter, eight times a year. Sponsors are renewed yearly and are listed in the 10,000 copies of the newsletter printed and distributed annually. All Carondelet organizations are encouraged to submit news items that may be of interest to the entire community.

You may use the form below to apply for a membership. Contact the CCBF office for current fees on each level of membership.



**CARONDELET
COMMUNITY
BETTERMENT
FEDERATION**
INCORPORATED

◆ ◆ ◆
6408 MICHIGAN AVENUE
ST. LOUIS, MO 63111
752-6339

A NOT-FOR-PROFIT NEIGHBORHOOD ASSOCIATION FOUNDED IN 1971

MEMBERSHIP APPLICATION

Please complete the following information and send your membership fee (do not send cash) along with this form to:
Carondelet Community Betterment Federation, Inc.
6408 Michigan Ave.
St. Louis MO 63111

DATE (12 month membership)

NAME _____

ADDRESS _____ ZIP CODE _____

BUSINESS NAME _____ BUSINESS ADDRESS _____ ZIP CODE _____

HOME PHONE _____ BUSINESS PHONE _____ EXTENSION _____

TYPE OF MEMBERSHIP _____ AMOUNT ENCLOSED (CHECK OR MONEY ORDER)

Call the CCBF office at 752-6339 to obtain current fees for each level of membership.

◆ PURPOSES & GOALS ◆

Carondelet Community Betterment Federation, Incorporated was founded in 1971 to address the problems and needs of the Carondelet neighborhood, to seek solutions and services for these, and to work with all other active organizations to avoid duplication of services.

Our goals are to:

- encourage the maintenance of buildings and property
- facilitate the work of rehabbers and developers
- attract new long term residents into our neighborhood
- work with the public and private school systems
- welcome new businesses into our community
- assist with job placements
- work with all organizations in Carondelet to develop community awareness and support
- serve as liaison between the community and city government

◆ NEIGHBORHOOD ACTIVITIES ◆

The Carondelet Neighborhood is thriving with activities year round for all ages. The CCBF is proud to sponsor and participate in many of these community building including:

- April - Annual Realtor's Day
- May - House & Garden Tour
- June - Concerts in Carondelet Park each Sunday 6pm to 8pm through mid August - admission is free.
- September - Annual "Who Does What In Carondelet" dinner and program.
- October - Carondelet Community and Business EXPO
- December - Carondelet Christmas Concert
- Quarterly Neighborhood Meetings
- Luncheon Meetings of the CCBF Business Group held monthly September through May

Call the CCBF Office at 752-6339 for more information on all of the above.

In response to the needs of residents, CCBF, Inc. operates these ongoing programs:



SENIOR HOUSE REPAIR PROGRAM

Administered from the CCBF office, 6408 Michigan, for citizens who:

- are 55 years of age or older
- live in their own home in Carondelet
- are in need of house repairs
- meet income guidelines



CARONDELET SENIOR CENTER

Located at St. Paul's Episcopal Church, 6518 Michigan, provides:

- hot lunch program
- meals delivered to the homebound
- recreational activities
- local trips for seniors
- special guest speakers and programs
- support and friendship for all

Reservations are required for meals. Call 353-9425, or for transportation call 752-5085 between 9am & 1:30pm Monday through Friday.



CCBF/ST. JOSEPH OUTREACH

Collaborating with St. Trinity Lutheran, St. Stephen's Protomartyr Catholic Church, St. Vincent DePaul and CCBF Services at 517 Koebig

- Food Pantry - open M/W/Sat, 9am - 11 am. For more information call 353-3276

Services at 6408 Michigan:

- utility assistance
 - Weatherization materials in winter
 - visitation of homebound
 - USDA food distribution monthly
- For more information call 457-9044, M-F 8am - 4:30pm

Services at 6522 Michigan:

- literacy program
 - GED training & English as a Second Language
 - remedial reading & math
 - counseling/job application assistance
- For literacy assistance call 481-6090

Look Us Up on the Web!
www.ccbf-inc.org

Throughout the year you can participate many activities which represent the broad spectrum of people, cultures and religions within the Carondelet Community.

◆ HISTORIC CARONDELET ◆

Carondelet had been incorporated as a city for 20 years before being annexed to the City of St. Louis in 1870. Named for the first Governor General of the Spanish-Louisiana Province (later to become the Louisiana Purchase), it still retains this historic identity today. The architecture reflects both the history and rich diversity of people who live in Carondelet. A number of buildings are listed on the National Historic Register.



*Sisters of St. Joseph Church



A house under restoration



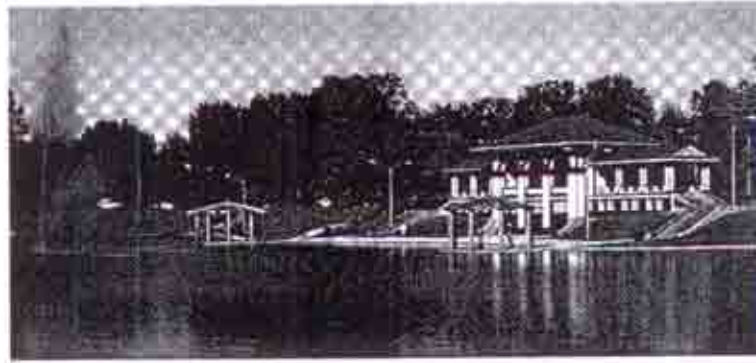
*Des Peres School, home of the first kindergarten west of the Mississippi



Ornate wrought iron fencing



Capitals on the facade of Sts. Mary and Joseph Chapel



◆ RECREATION ◆

The 180 rolling green acres of Carondelet Park make it the third largest park in St. Louis. Dedicated on July 4, 1876, centennial of the signing of the Declaration of Independence, it remains a popular gathering place for the entire community. Recreational facilities include two lakes stocked for fishing, hiking and cycling trails, lighted ball fields, tennis courts and a bank of horseshoe pits. Picnic shelters and Victorian music stands are kept busy from spring until autumn. The historic Lyle Mansion, built in 1842 and home of the original land owner, is located in Carondelet Park. The mansion is not open to visitors. Beautiful Bellrive Park is perched high on a bluff over-looking the Mississippi River and offers a great view of the river from the Gateway Arch to the Jefferson Barracks Bridge. In addition to a spectacular view, visitors find a large plaque describing the history of Carondelet.



Just south of Bellrive Park at river level is Sister Marie Charles Park which provides visitors a lighted promenade to enjoy the power and beauty of the Mississippi first-hand. This is the only direct access the public has to the riverfront in the South City area. Entrance to the park is at Elwood and South Broadway.

The Carondelet Branch of the St. Louis Public Library was built in 1907 with funds from Andrew Carnegie (one of only 7 in the city). Carnegie is credited with almost single-handedly establishing the public library system in America. Today, we have access to the entire library collection and it's services through computers in our neighborhood branch.



Another community asset is the Carondelet YMCA located just east of I-55 on Loughborough. Among its facilities are a swimming pool, gymnasium and Cybex fitness center. An enormous variety of classes and activities are offered year round for all age groups and levels of fitness.